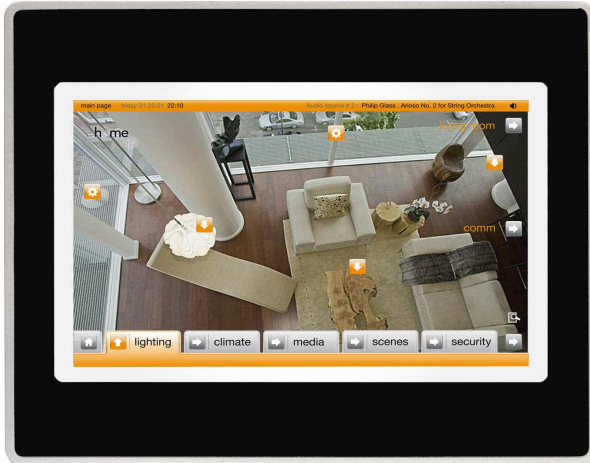


DomiOP eBIS507

The DomiOP eBIS Series 500 HMI products combine state-of-the-art features and top performance with an outstanding design. They are the ideal choice for all demanding HMI applications including factory and building automation.

The eTOP507 features a bright 7" TFT widescreen (16:9) display with LED backlight.

The JMobile software offers full vector graphic capabilities and plenty of connectivity options.



- 7" TFT color display, LED backlight
- 800x480 pixel (WVGA) resolution, 64K colors
- Resistive touchscreen
- 2 Ethernet ports with switch function
- 2 USB Host ports
- SD Card Slot
- Connection to bus systems using optional plug-in modules
- Slim design. Mounting depth less than 50mm

Highlights

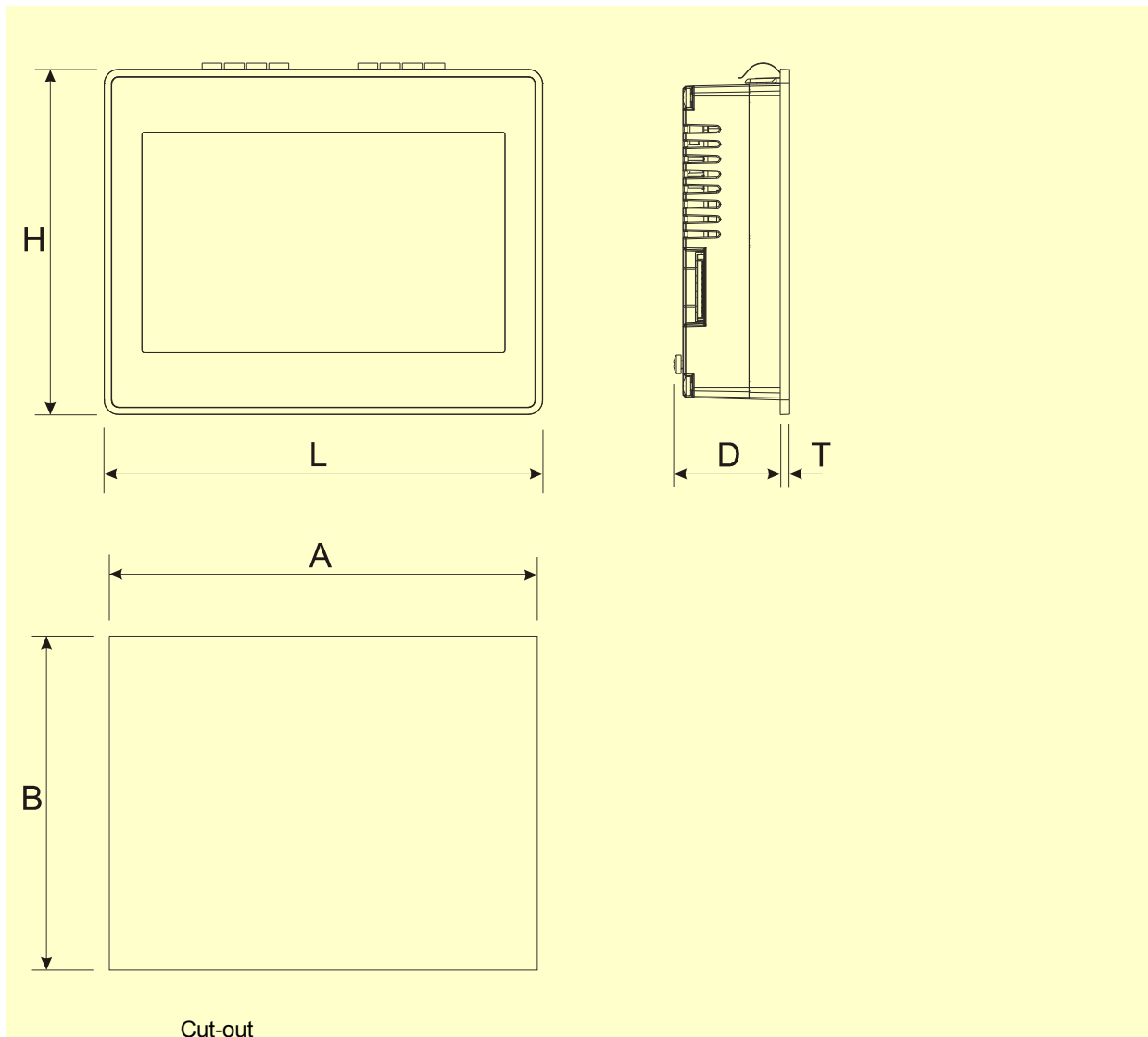
The eBIS Series 500 HMI panels have been designed to run the JMobile software.

- JMobile runtime included. Full compatibility with JMobile Studio.
- Full vector graphic support. Native support of SVG graphic objects. Transparency and alpha blending.
- Full object dynamics: control visibility and transparency, move, resize, rotate any object on screen. Change properties of basic and complex objects.
- TrueType fonts
- Multilanguage applications. Easily create and manage your applications in multiple languages to meet global requirements. Far East languages are supported. Tools available in JMobile Studio support easy third-party translations and help reducing development and maintenance costs of the application
- Data display in numerical, text, bargraph, analog gauges and graphic image formats.
- Rich set of state-of-the-art HMI features: data acquisition, alarm handling, scheduler and timed actions (daily and weekly schedulers, exception dates), recipes, users and passwords, e-mail and RSS feeds, rotating menus
- Includes support for a wide range of communication drivers for Factory and Building Automation systems.
- Multiple drivers communication capability.
- Remote monitoring and control. Client-Server functionality. Mobile clients supported.
- Off-line simulation with JMobile Studio.
- Powerful scripting language for automating HMI applications. Script debugging improves efficiency in application development.
- Rich gallery of symbols and objects
- Project templates
- Optional plug-in modules for fieldbus systems, I/O and controllers.

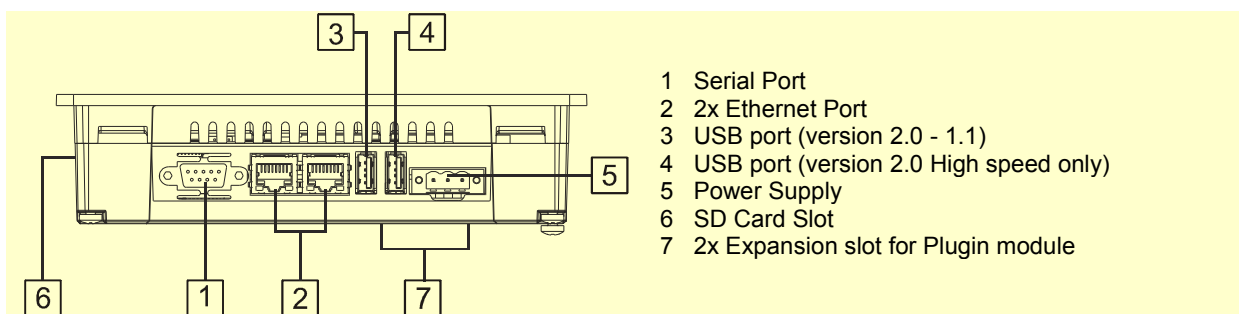
Technical Data

Display		Hardware Real Time Clock	Yes, with battery back-up
Type	TFT	Clock	
Resolution	800x480, WVGA	Screen saver	Yes
Active display area	7" diagonal	Buzzer	Yes, audible feedback for touchscreen
Colors	64K		
Backlight	LED	Ratings	
Brightness	300 Cd/m ² typ.	Power supply voltage	24 Vdc (18 to 30 Vdc)
Dimming	Yes	Current consumption	0.7A at 24Vdc(max.)
		Fuse	Automatic
System Resources		Weight	Approx 1.0 Kg
Operating System	Microsoft Windows CE 6.0	Battery	Rechargeable Lithium battery, not user-replaceable
User memory	128 MB Flash		
RAM	256MB DDR		
		Environmental Conditions	
Operator Interface		Operating temperature	5 to 40 °C (vertical installation)
Touchscreen	Analog resistive	Storage temperature	-20 to +70 °C
User LED indicators	1 (dual color)	Operating and storage humidity	5 – 85 % relative humidity, non-condensing
		Protection class	IP20
		Dimensions	
Interface		Faceplate LxH	187x147 mm (7.36x5.79")
Ethernet	2 10/100 Mbit with integrated Switch	Cutout AxB	176x136 mm (6.93x5.35")
USB	2 Host Interface (1 version 2.0, 1 version 2.0 and 1.1)	Depth D+T	47+4 mm (1.85+0.16")
Serial	RS-232, RS-485, RS-422, software configurable		
Expansion Slot	2 Optional Plugin	Approvals	
Memory Card	SD Card Slot	CE	EN 50090-2-2 + EN 50090-2-2/A1+EN 50090-2-2/A2
			Immunity
Functionality			EN 61000-6-1,
Vector graphics	Yes, includes SVG support		Emission
Object dynamics	Yes. Visibility, opacity, position, size, rotation for most object types.		EN 61000-6-3
TrueType fonts	Yes		for installation in residential environments
Multiple driver communication	Yes		
Data acquisition and trend presentation	Yes. Flash memory storage		
Multilanguage	Yes, with runtime language switching.		
Recipes	Yes. Flash memory storage		
Alarms	Yes		
Historical event list	Yes		
Users and passwords	Yes		

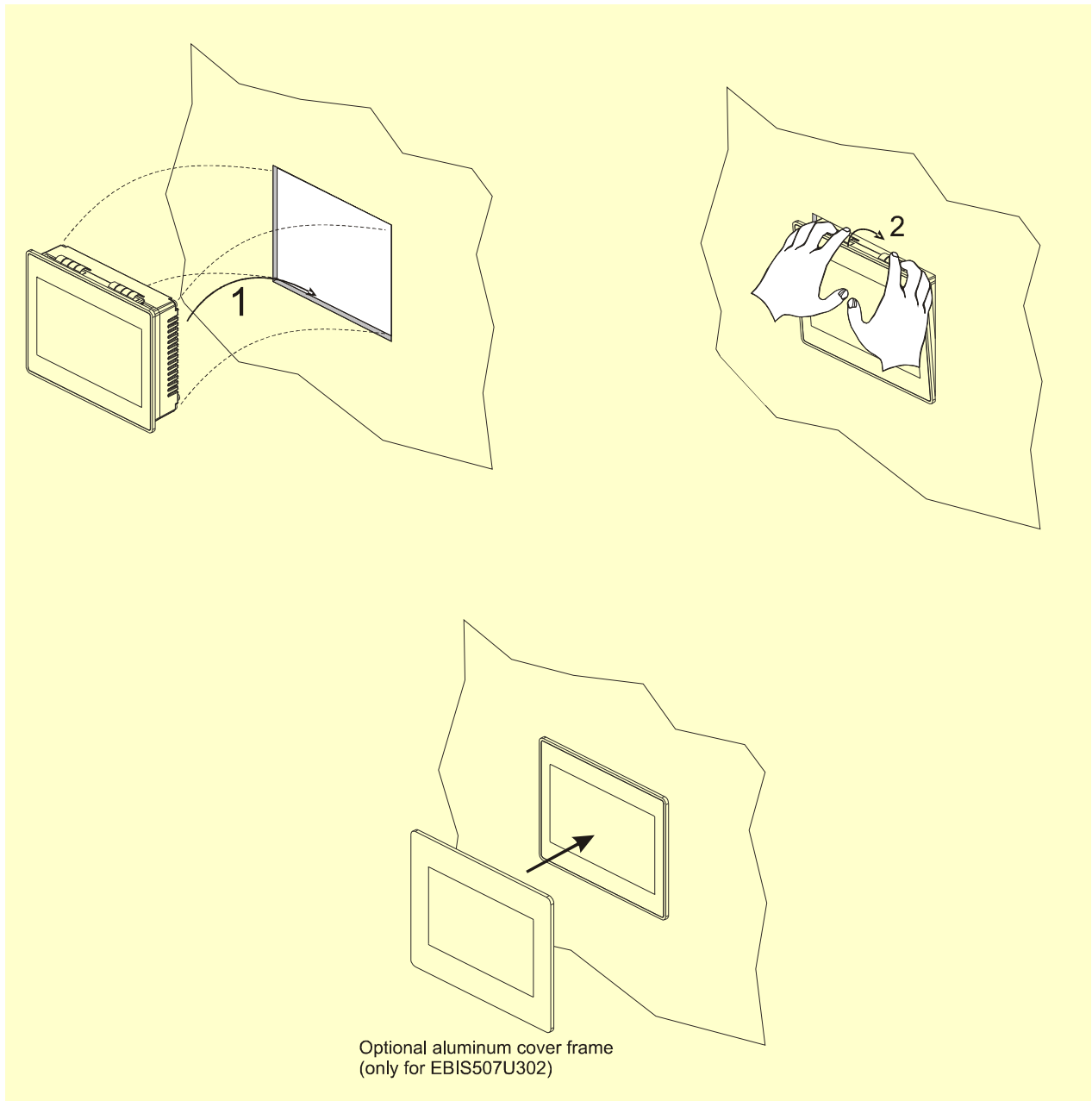
Dimensions



Connections



Mounting into Wall-mount Box



Ordering Information

Model	Part Number	Description
eBIS507-White	+EBIS507U101 +EBIS507U103	7" widescreen TFT color touchscreen with Ethernet and USB interfaces. JMobile run-time. White front panel.
eBIS507-Silver	+EBIS507U201 +EBIS507U203	7" widescreen TFT color touchscreen with Ethernet and USB interfaces. JMobile run-time. Silver front panel.
eBIS507-Black	+EBIS507U301 +EBIS507U303	7" widescreen TFT color touchscreen with Ethernet and USB interfaces. JMobile run-time. Black front panel.
eBIS507-Black with cover	+EBIS507U302 +EBIS507U304	7" widescreen TFT color touchscreen with Ethernet and USB interfaces. JMobile run-time. Black front panel, with additional cover
COVER07-01	R-COVER013	Aluminum cover frame for eBIS507 – only for +EBIS507U302/+EBIS507U304
BOX507-01	R-BOX11	Wall-mount box for eBIS507

ptn0376

Ver. 1.6

Copyright © 2011-2014 Exor International S.p.A. – Verona, Italy

Subject to change without notice

The information contained in this document is provided for informational purposes only. While efforts were made to verify the accuracy of the information contained in this documentation, it is provided "as is" without warranty of any kind.

www.uniop.com