

eX715MG Tech-Note

Outdoor HMI 15" capacitive touchscreen, sunlight-readable with optical bonding

- Readable in Full Sunlight
- Projected capacitive touchscreen with optical bonding. Multitouch operation
- 15.6 TFT color display
- Full HD resolution 1920x1080 pixel
- Operating Temperature -30°C to +70°C



Highlights

eX700MG Series combine high-performance sunlight-readable display with state-of-the-art connectivity features and top performance in a great design maintaining as a design commitment the fact that the product is likely to be used in environments where the safety of operators is at risk.

EXOR has designed the product range as Industrial IoT edge devices combining a powerful controller with networking capability and outstanding communication options including client/server OPC UA. They are the ideal choice for all demanding IIoT edge applications in extreme environments such as marine and process industries.

The glass projected capacitive touchscreen and the brilliant 15 inch widescreen display with a resolution of 1920x1080 are bonded to guarantee the highest optical performance and resistance in such environments.

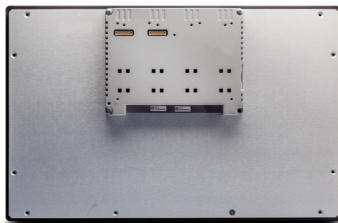
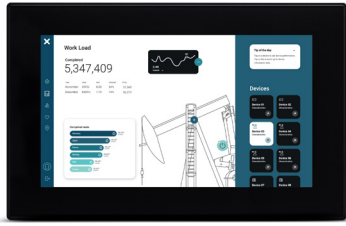
JMobile runtime included. Requires JMobile V 4.5 or higher

Supports Corvina Cloud secure connectivity with full network separation

OPC UA Server and Client

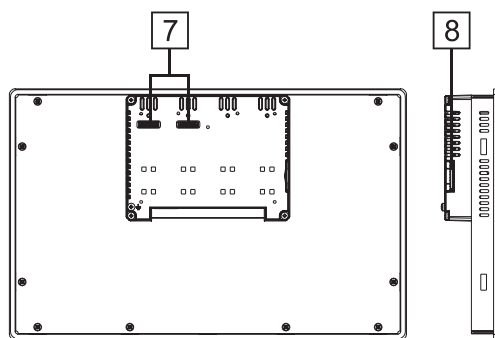
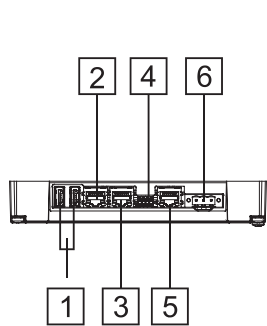
Optional CODESYS V3 runtime with choice of EtherCAT, PROFINET, Ethernet/IP and POWERLINK

eX715MG - Technical Data

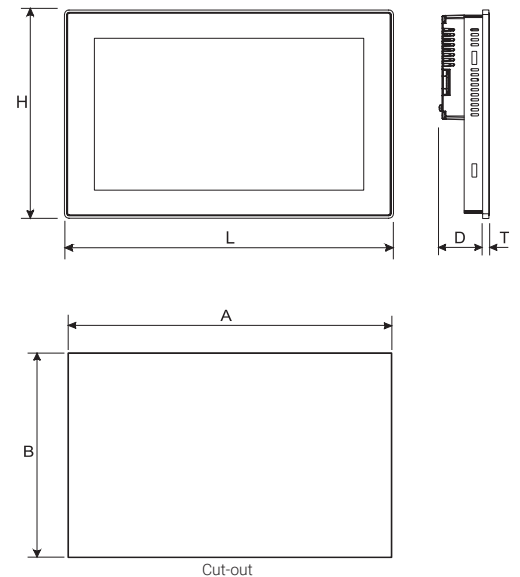


System Resources	
Display - Colors	15,6 TFT LED - 16M
Resolution	1920x1080, full HD
Brightness	700 cd/m ² typ.
Dimming	Yes
Touchscreen	True Glass Projected Capacitive, Multitouch, Optical Bonding
CPU	64-bit RISC quad core - 1.6GHz
Operating System	Linux
Flash	8 GB
RAM	2 GB
FRAM	64 KB
Real Time Clock, RTC Back-up	Yes
Interface	
Ethernet port	3 (port 0 - 10/100/1000, port 1 - 10/100, port 2 - 10/100)
USB port	2 (Host V2.0, max. 500 mA)
Serial port	1 (RS-232, RS-485, RS-422, software configurable) Max 3 serial ports using plug-in modules.
SD card	Yes
Buzzer	Yes
Expansion	2 slot for plug in modules
Ratings	
Power supply	24 Vdc (10 to 32 Vdc)
Current Consumption	1.35 A at 24 Vdc (max.)
Input Protection	Electronic
Battery	Rechargeable Lithium battery, not user-replaceable
Environment Conditions	
Operating Temperature	-30° to +70 °C (vertical installation). Plug-in modules and USB devices may limit max temperature to +50 °C
Storage Temperature	-40°C to +85°C
Operating / Storage Humidity	5-85% RH, non condensing
Protection Class	IP66 (front), IP20 (rear) - Type: 12, 4X
Dimensions and Weights	
Faceplate LxH	422x267 mm (16.6x10.5")
Cutout AxB	411x256 mm (16.18x10")
Depth D+T	56+8 mm (2.20+0.31")
Weight	4.1 Kg
Approvals	
CE	Electromagnetic Compatibility Directive 2014/30/EU (EMC)
UL	cULus: UL61010-1 / UL61010-2-201
UL*	cULus: Class 1 Div 2
DNV	Yes
RCM	Yes

* In progress



- 1 USB ports 1 and 2
- 2 Ethernet port 2 (10/100 Mb)
- 3 Ethernet port 1 (10/100 Mb)
- 4 Serial port
- 5 Ethernet port 0 (10/100/1000 Mb)
- 6 Power supply
- 7 2 Expansion slots for plugin modules
- 8 SD Card slot



Ordering Information

Model	Part Number	Description
eX715MG	+EX715MGU5P1	Outdoor HMI 15" PCAP Touch, sunlight-readable with bonding, 3x Ethernet, JMobile runtime