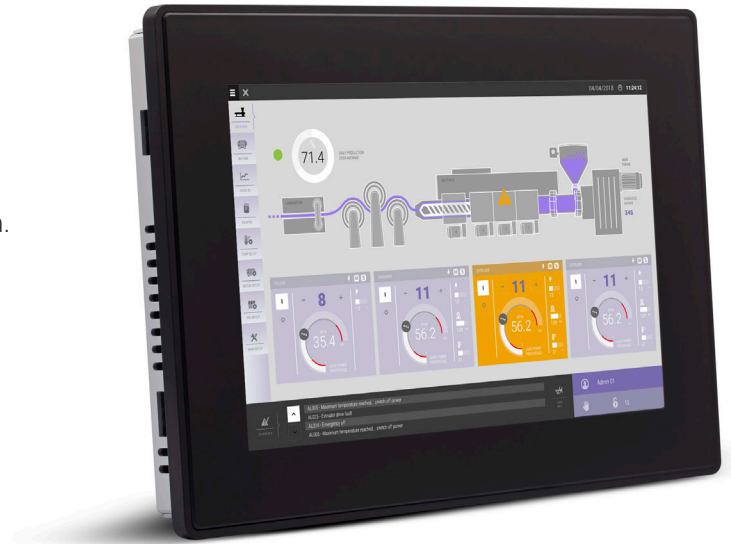


eX710 Tech-Note

HMI 10" TFT, 1280x800, PCAP Touch , 4 GB Flash, 3x Ethernet, JMobile runtime

- 10.1" TFT color display, resolution 1280x800 pixel, 16M colors. Dimmable LED backlight
- Projected capacitive touchscreen. True glass design. Multitouch operation
- 3 Ethernet ports
- SD Card slot
- 2 Plug-in modules for system expansion



Highlights

eX700 Series HMI products combine state-of-the-art connectivity features and top performance in a great design.

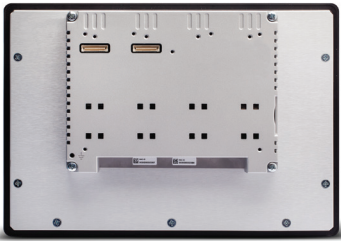
Products have been designed as IoT edge devices with the combination of a powerful controller with networking capability and outstanding communication options including client/server OPC UA. They are the ideal choice for all demanding IoT edge applications in factory, marine and building automation.

The glass projected capacitive touchscreen and the brilliant 10.1" widescreen display with resolution of 1280x800 guarantee great optical performance; with the support of multitouch gesture programming they can create the most natural human interfaces.

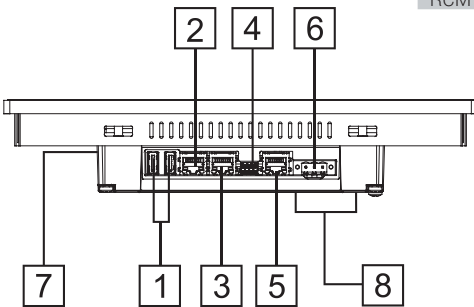
eX Series 700 HMI products have been designed to run the JMobile software.

- JMobile runtime included
- Requires JMobile V2.6 or higher
- Supports Corvina Cloud secure connectivity with full network separation
- OPC UA Server and Client
- Optional CODESYS V3 runtime with choice of EtherCAT, Profinet, Ethernet IP and Powerlink

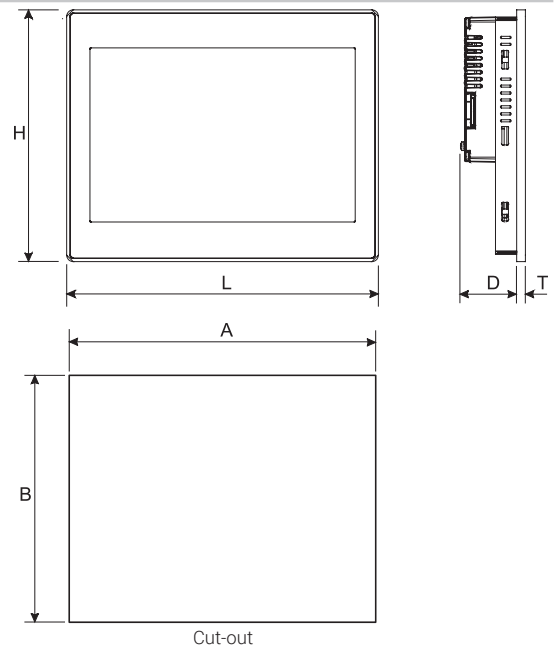
eX710 - Technical Data



System Resources	
Display - Colors	10.1" TFT 16:9 LED - 16M
Resolution	1280x800, WXGA
Brightness	500 Cd/m2 typ.
Dimming	to 0%
Touchscreen	PCAP, Multitouch
CPU	32-bit RISC dual core - 800 MHz
Operating System	Linux RT
Flash	4 GB
RAM	1 GB
RT-Clock, RTCBack-up, Buzzer	Yes
Interface	
Ethernet port	3 (port 0 - 10/100/1000, port 1 - 10/100, port 2 - 10/100)
USB port	2 (Host V2.0, max. 500 mA)
Serial port	1 (RS-232, RS-485, RS-422, software configurable) Max 3 serial ports using plug-in modules.
SD card	Yes
Expansion	2 slot for plug in modules
Ratings	
Power supply	24 Vdc (10 to 32 Vdc)
Current Consumption	1.0 A at 24 Vdc (max.)
Input Protection	Electronic
Battery	Rechargeable Lithium battery, not user-replaceable
Environment Conditions	
Operating Temperature	-20° to +60 °C (vertical installation). Plug-in modules and USB devices may limit max temperature to +50 °C
Storage Temperature	-20°C to +70°C
Operating / Storage Humidity	5-85% RH, non condensing
Protection Class	IP66 (front), IP20 (rear) - Type: 12, 4X
Dimensions and Weights	
Faceplate LxH	282x197 mm (11.10x7.80")
Cutout AxB	271x186 mm (10.67x7.32")
Depth D+T	56+8 mm (2.20+0.33")
Weight	2.5 Kg
Approvals	
CE	Electromagnetic Compatibility Directive 2014/30/EU (EMC)
ATEX	Zone 2/22: II 3 G Ex ec IIC T5...T4 Gc, II 3 D Ex to IIIC T95°C Dc -20°C ≤ Tamb ≤ +60°C or 0°C ≤ Tamb ≤ +50°C
IECEX	Zone 2/22: Ex ec IIC T5...T4 Gc, Ex to IIIC T95°C Dc -20°C ≤ Tamb ≤ +60°C or 0°C ≤ Tamb ≤ +50°C
UL	cULus: UL61010-1 / UL61010-2-201
UL	cULus: Class 1 Div 2
DNV-GL	Yes
LR	Yes
EU RO MR	Yes
RCM	Yes



- 1 USB ports 1 and 2
- 2 Ethernet port 2 (10/100 Mb)
- 3 Ethernet port 1 (10/100 Mb)
- 4 Serial port
- 5 Ethernet port 0 (10/100/1000 Mb)
- 6 Power supply
- 7 SD Card slot
- 8 2 Expansion slots for plugin modules



Ordering Information

Model	Part Number	Description
eX710	+EX710U5P1	HMI 10.1" TFT 1280x800, PCAP Touchscreen, 4 GB Flash memory, 3x Ethernet ports, JMobile runtime