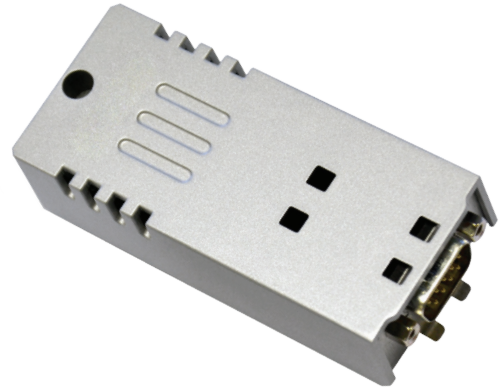


# PLCM06 Tech-Note

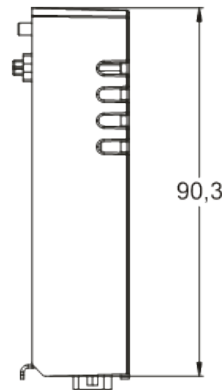
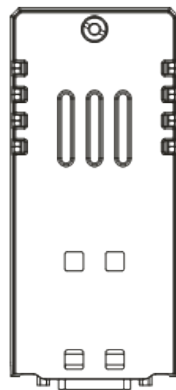
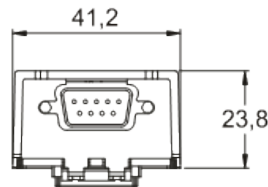
## Plug-in module PROFIBUS DP

PLCM06 is a plug-in module for use when a PROFIBUS DP slave interface is required with JMobile.  
 The plug-in is compatible with Series 500, 500G, 600, eX and eXware.



- PROFIBUS DP slave interface
- Max. speed 12 Mb
- Optical isolation
- DB 9 connector

Environmental Conditions	
Operating temperature	0° to +50°C
Storage temperature	-20° to +70°C
Operating and storage humidity	5 – 85 % relative humidity, non-condensing
Protection class	IP20
Approvals	
CE	Emission EN 61000-6-4, Immunity EN 61000-6-2 for installation in industrial environments, Emission EN 60945, Immunity EN 60945 for marine environments
RCM	Yes



## Ordering Information

Model	Part Number	Description
PLCM06	+PLCM06U0P1	Plug-in module Profibus DP slave 12 Mb