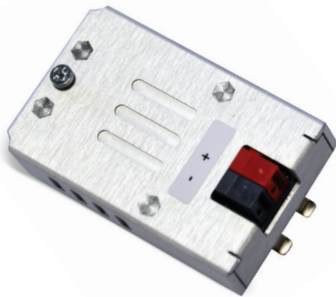


PLCM02 Plug-in module KNX-TP Tech-Note

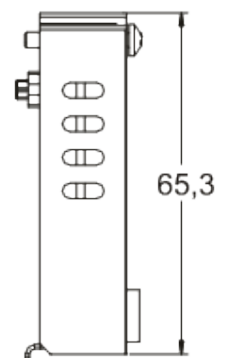
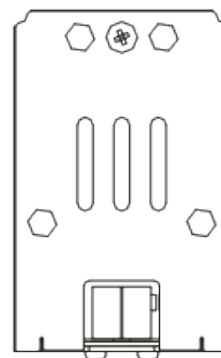
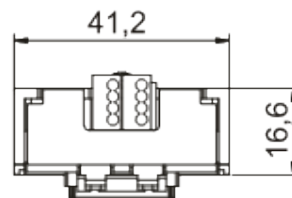
PLCM02 is a plug-in module for use when KNX TP communication is required with JMobile. The plug-in is compatible with Series 500, 500G, 600 and eX700.

- KNX TP interface
- Optical isolation

Technical Data



| Environmental Conditions | |
|--------------------------------|---|
| Operating temperature | 0° to +50°C |
| Storage temperature | -20° to +70°C |
| Operating and storage humidity | 5 – 85 % relative humidity, non-condensing |
| Protection class | IP20 |
| Approvals | |
| CE | Emission EN 61000-6-4, Immunity EN 61000-6-2 for installation in industrial environments, Emission EN 61000-6-3, Immunity EN 61000-6-1 for installation in residential environments |
| RCM | Yes |



Ordering Information

| Model | Part Number | Description |
|--------|-------------|---------------------------------------|
| PLCM02 | +PLCM02U0P1 | Plug-In module KNX/EIB (TP Interface) |