

eX721M | Web HMI - Tech Note

21.5" TFT 1920x1080, PCAP Touchscreen

- Chromium based HTML5 Browser
- Easy to use browser setting application
- 21.5" TFT color display, resolution 1920x1080 pixel
- Projected capacitive touchscreen. True glass design. Multitouch operation.
- Operating Temperature -20°C to +60°C
- IECEx, ATEX, DNV-GL, cULus, cULus: Class 1 Div 2



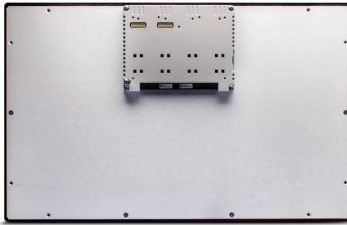
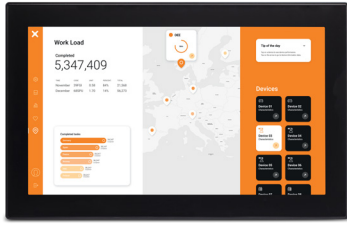
Highlights

eX700M Web HMI products combine state-of-the-art connectivity features and top browsing performance in a great design. They are the ideal choice for all demanding IoT edge applications in factory, marine and building automation where powerful and performing HTML5 web browser is needed.

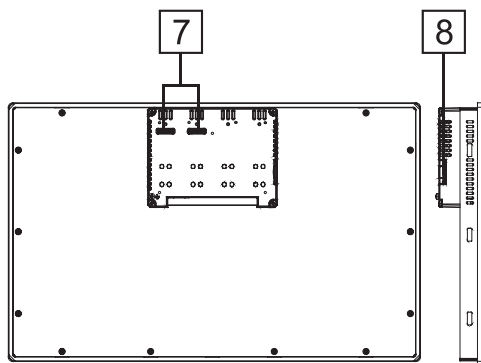
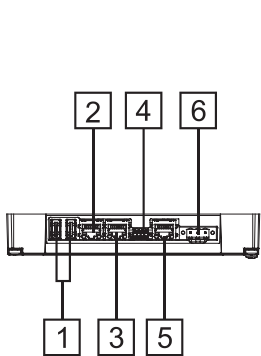
The glass projected capacitive touchscreen and the brilliant 21.5 widescreen display with resolution of 1920x1080 guarantee great optical performance; with the support of multitouch gesture programming they can create the most natural human interfaces.

eX700M Web HMI products include a Chromium based HTML5 browser supporting kiosk mode operation. Supports Corvina Cloud secure connectivity with full network separation.

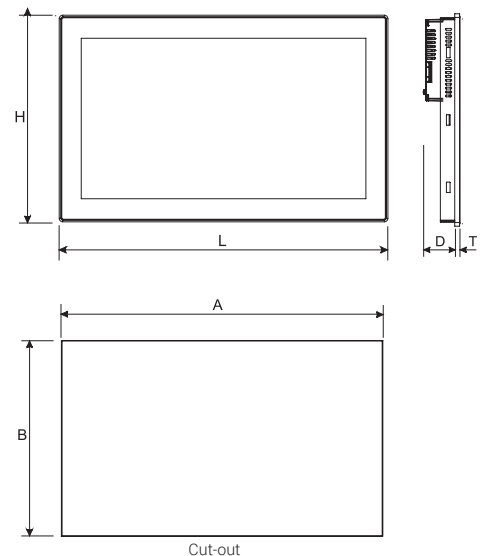
eX721M Technical Data



| System Resources | |
|------------------------------|---|
| Display - Colors | 21,5" TFT LED - 16M |
| Resolution | 1920x1080, full HD |
| Brightness | 300 cd/m2 |
| Dimming | Yes |
| Touchscreen | True Glass Projected Capacitive, Multitouch |
| CPU | 64-bit RISC quad core - 1.6 GHz |
| Operating System | Linux |
| Flash | 8 GB |
| RAM | 2 GB |
| FRAM | 64 KB |
| RT-Clock, RTCBack-up, Buzzer | Yes |
| Interface | |
| Ethernet port | 3 (port 0 - 10/100/1000, port 1 - 10/100, port 2 - 10/100) |
| USB port | 2 (Host V2.0, max. 500 mA) |
| Serial port | 1 (RS-232, RS-485, RS-422, software configurable). Max 3 serial ports using plug-in modules. |
| SD card | Yes |
| Expansion | 2 slot for plug in modules |
| Ratings | |
| Power supply | 24 Vdc (10 to 32 Vdc) |
| Current Consumption | 1.7 A at 24 Vdc (max.) |
| Input Protection | Electronic |
| Battery | Rechargeable Lithium battery, not user-replaceable |
| Environment Conditions | |
| Operating Temperature | -20° to +60 °C (vertical installation). Plug-in and USB devices may limit max temperature to +50 °C |
| Storage Temp | -20°C to +70°C |
| Operating / Storage Humidity | 5-85% RH, non condensing |
| Protection Class | IP66 (front), IP20 (rear) - Type: 12, 4X |
| Dimensions and Weights | |
| Faceplate LxH | 552x347 mm (21,7x13,66") |
| Cutout AxB | 541x336 mm |
| Depth D+T | 56+8.5 mm |
| Weight | 6.1 Kg |
| Approvals | |
| CE | Electromagnetic Compatibility Directive 2014/30/EU (EMC) |
| ATEX | Zone 2/22: II 3 G Ex nA IIC T5 Gc, II 3 D Ex tc IIIC T95°C Dc |
| IECEX | Zone 2/22: Ex nA IIC T5 Gc, Ex tc IIIC T95°C Dc |
| UL | cULus: UL61010-1 / UL61010-2-201 |
| UL | cULus: Class 1 Div 2 |
| DNV | Yes |
| RCM | Yes |



- 1 USB ports 1 and 2
- 2 Ethernet port 2 (10/100 Mb)
- 3 Ethernet port 1 (10/100 Mb)
- 4 Serial port
- 5 Ethernet port 0 (10/100/1000 Mb)
- 6 Power supply
- 7 2 Expansion slots for plugin modules
- 8 SD Card slot



Ordering Information

| Model | Part Number | Description |
|--------|-------------|--|
| eX721M | +EX721MU5PW | Web HMI 21.5" TFT 1920x1080, PCAP Touchscreen, 8 GB Flash memory, 3x Ethernet ports, Web browser |