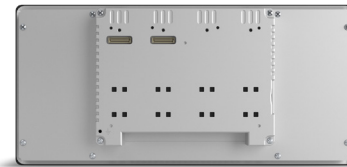


# eX712M | Web HMI - Tech Note

---

## Web HMI 12" TFT, 1920x720, PCAP Touch, 3x Ethernet, Web browser

- Chromium based HTML5 Browser
- Easy to use browser setting application
- Resolution 1920x720 (24:9)
- Ideal for presenting multiple context on screen
- Full JMobile compatibility
- IECEx, ATEX, DNV-GL, cULus, cULus: Class 1 Div 2



## Highlights

eX700M Web HMI products combine state-of-the-art connectivity features and top browsing performance in a great design. They are the ideal choice for all demanding IoT edge applications in factory, marine and building automation where powerful and performing HTML5 web browser is needed.

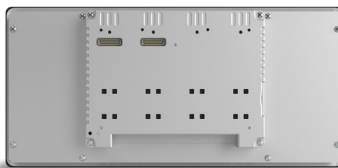
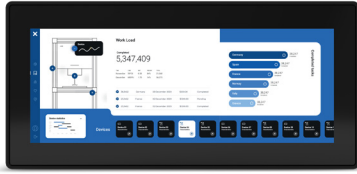
The glass projected capacitive touchscreen and the brilliant 12,3 widescreen display with resolution of 1920x720 guarantee great optical performance; with the support of multitouch gesture programming they can create the most natural human interfaces.

Suitable for landscape and portrait operation.

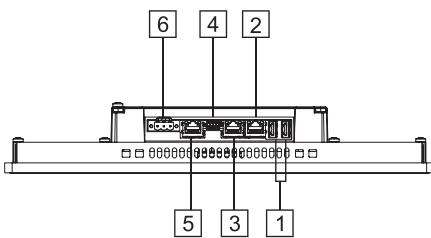
eX700M Web HMI products include a Chromium based HTML5 browser supporting kiosk mode operation.

Supports Corvina Cloud secure connectivity with full network separation.

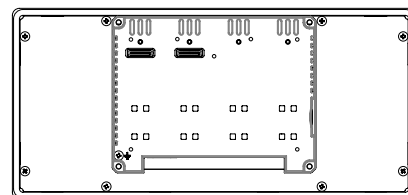
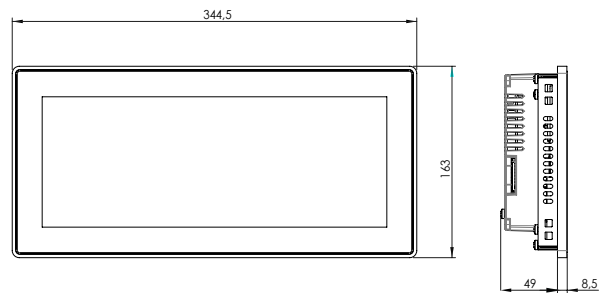
# eX712M Web HMI - Technical Data



| System Resources             |  |
|------------------------------|--|
| Display - Colors             | 12.3" TFT LED - 16M  |
| Resolution                   | 1920x720, HD   |
| Brightness                   | 600 cd/m2  |
| Dimming                      | Yes  |
| Touchscreen                  | True Glass Projected Capacitive, Multitouch  |
| CPU                          | 64-bit RISC quad core - 1.6 GHz  |
| Operating System             | Linux  |
| Flash                        | 8 GB   |
| RAM                          | 2 GB   |
| FRAM                         | 64 KB  |
| RT-Clock, RTCBack-up, Buzzer | Yes  |
| Interface                    |  |
| Ethernet port                | 3 (port 0 - 10/100/1000, port 1 - 10/100, port 2 - 10/100)   |
| USB port                     | 2 (Host V2.0, max. 500 mA)   |
| Serial port                  | 1 (RS-232, RS-485, RS-422, software configurable). Max 3 serial ports using plug-in modules.                     |
| SD card                      | Yes  |
| Expansion                    | 2 slot for plug in modules   |
| Ratings                      |  |
| Power supply                 | 24 Vdc (10 to 32 Vdc)  |
| Current Consumption          | 1.1 A at 24 Vdc (max.)   |
| Input Protection             | Electronic   |
| Battery                      | Rechargeable Lithium battery, not user-replaceable   |
| Environment Conditions       |  |
| Operating Temperature        | -20° to +60 °C (vertical installation). Plug-in and USB devices may limit max temperature to +50 °C              |
| Storage Temperature          | -20°C to +70°C   |
| Operating / Storage Humidity | 5-85% RH, non condensing   |
| Protection Class             | IP66 (front), IP20 (rear) - Type: 12, 4X   |
| Dimensions and Weights       |  |
| Faceplate LxH                | 344.5x163 mm (13.56x6.41")   |
| Cutout AxB                   | 332.5x152 mm (13.09x5.94")   |
| Depth D+T                    | 49+8.5 mm (1.92+0.33")   |
| Weight                       | 1.8 Kg   |
| Approvals                    |  |
| CE                           | Electromagnetic Compatibility Directive 2014/30/EU (EMC)   |
| ATEX                         | Zone 2/22: II 3 G Ex ec IIC T5...T4 Gc, II 3 D Ex tc IIIC T95°C Dc<br>-20°C ≤ Tamb ≤ +60°C or 0°C ≤ Tamb ≤ +50°C |
| IECEX                        | Zone 2/22: Ex ec IIC T5...T4 Gc, Ex tc IIIC T95°C Dc<br>-20°C ≤ Tamb ≤ +60°C or 0°C ≤ Tamb ≤ +50°C               |
| UL                           | cULus: UL61010-1 / UL61010-2-201   |
| UL                           | cULus: Class 1 Div 2   |
| DNV                          | Yes  |
| RCM                          | Yes  |



- 1 USB ports 1 and 2
- 2 Ethernet port 2 (10/100 Mb)
- 3 Ethernet port 1 (10/100 Mb)
- 4 Serial port
- 5 Ethernet port 0 (10/100/1000 Mb)
- 6 Power supply



## Ordering Information

| Model      | Part Number | Description   |
|------------|-------------|---|
| eX712M Web | +EX712MU5PW | Web HMI 12.3" TFT 1920x720, PCAP Touchscreen, 8 GB Flash memory, 3x Ethernet ports, Web browser |